

FORM NO. 1.

Courses up Monongahala.  
Beg. at a post & running

S. 57° W. 53 f

S. 68 W. 21 f

S. 75 W. 42 f

S. 80 W. 25 f

S. 85 W. 64 f

N. 88 W. 23 f

N. 86 W. 28 f

N. 75 W. 22 f

N. 67 W. 28 f

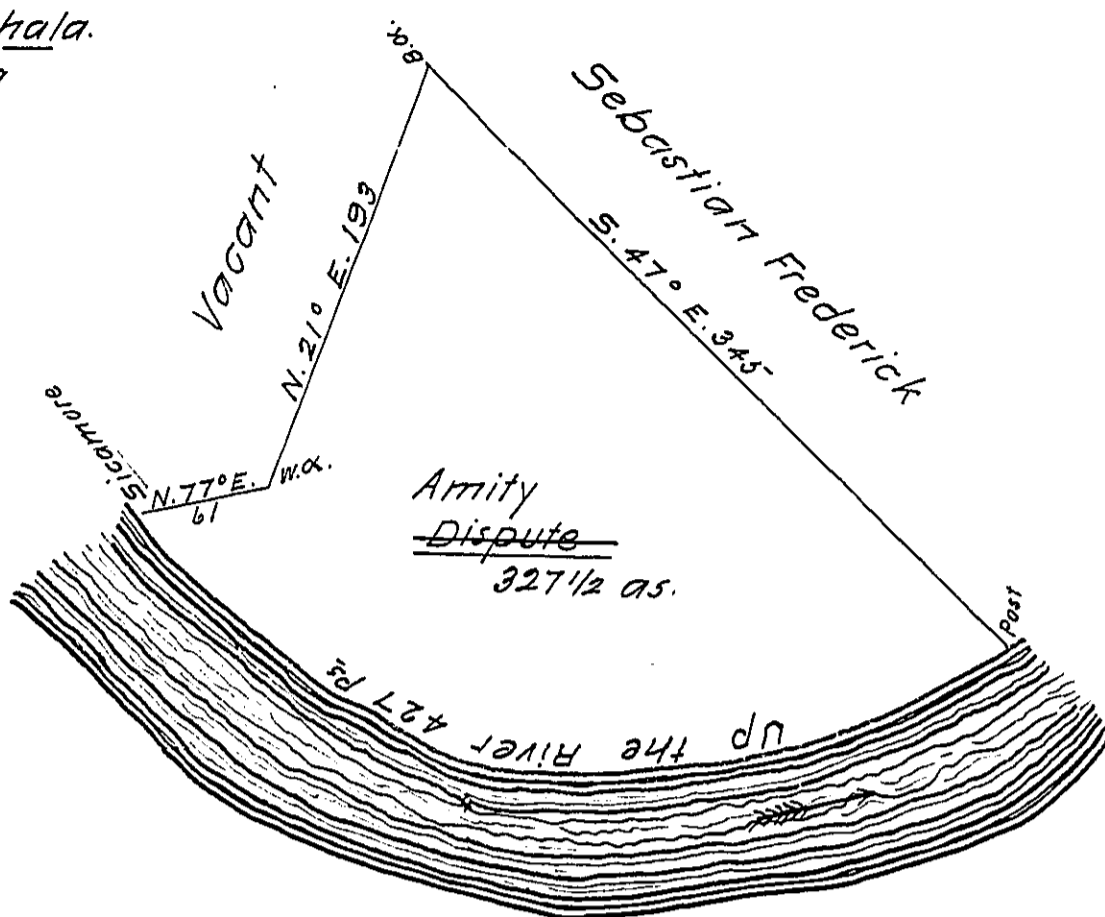
N. 50 W. 73 f

N. 48 W. 20 f

N. 44 W. 28 f

Total 427

to a Sycamore



In pursuance of an order No 1150 dated 3<sup>d</sup> April 1769 the above  
is a draught of a tract of land call'd ~~Dispute~~ <sup>Amity</sup> situated on the West side  
Monongahala containing 327-2-8 acres with the usual allowance  
of 6 f. C. for roads, highways &c. Survey'd for Thomas Smith 11<sup>th</sup>  
July 1769 by

James Hendricks

To John Lukens Esq<sup>r</sup>  
Surveyor General

IN TESTIMONY that the above is a copy of the original remaining on file in  
the Department of Internal Affairs of Pennsylvania, made  
conformably to an Act of Assembly approved the 16th day of  
February, 1833, I have hereunto set my Hand and caused  
the Seal of said Department to be affixed at Harrisburg,  
this twenty-first day of May 1912

Henry Honck  
Secretary of Internal Affairs.